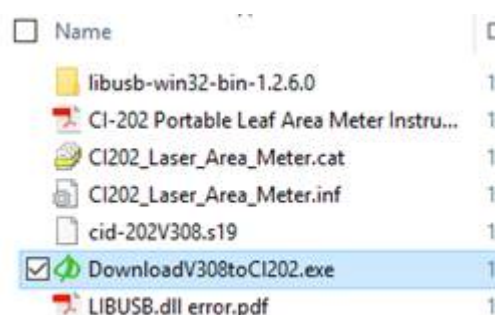


## Update CI-202 Firmware

Download the 'CI-202 Firmware UpdateV308 and Driver.zip' from the software page: <https://www.cid-inc.com/support/CI-202/software/>

Extract all

You should now have folder contents as follows:

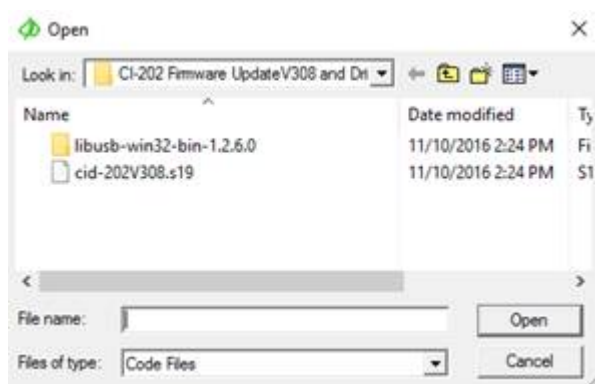


Connect the CI-202 to your computer and power on

In the download folder, double click on the 'downloadV308toCI202.exe'

In the software window, select File > Open

You should see the following:



Select cid-202V308.s19 > Open

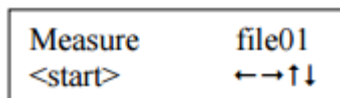
At this point, the CI-202 will start to beep until the firmware is loaded.

Upon completion, you will see 'leaving OPEN', and the unit will be powered off



Power the instrument on.

The image below should be displayed on the instrument's screen



Press the LEFT and RIGHT arrow keys at the SAME time, the motor will begin to start-up and spin

Next, the motor will stop spinning, during this time, the display on the screen does not change.

Scan a leaf or piece of paper of known size to test the accuracy of the instrument, the high and low thresholds should be checked and adjusted if necessary.